



Reducing “Waste” & Finding Its Proper Place



Pennsylvania
Resources
Council, Inc.

“Working to protect the environment since 1939”

Who is PRC?

- ▶ PA's oldest grassroots environmental non-profit
- ▶ Protects PA's Resources through:
 - ▶ Waste Reduction & Recycling Programming
 - ▶ Anti-Litter Campaigns
 - ▶ Environmental Education



"Working to protect the environment since 1939"





Zero Waste PA

Pennsylvania Resources Council

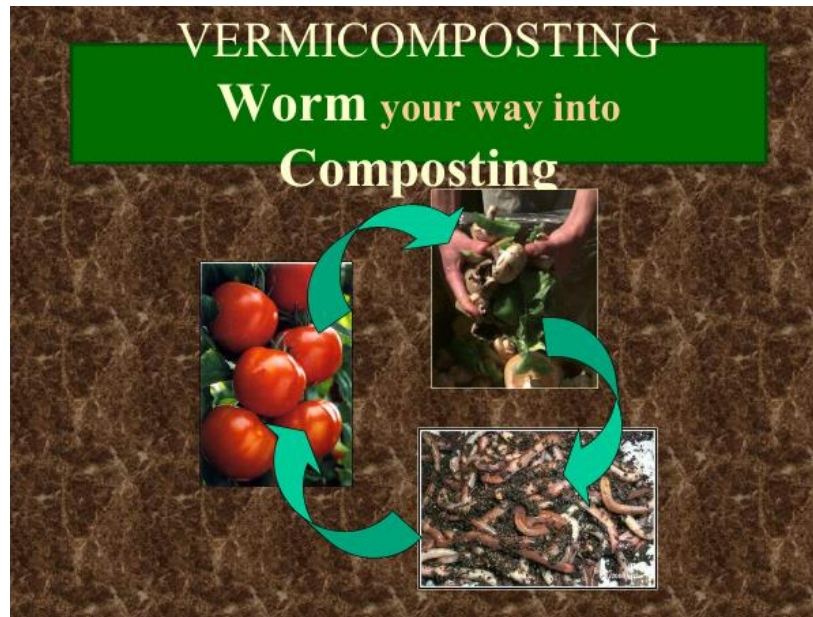
HTR



HHW



E
D
U
C
A
T
I
O
N



Glass Collection Events

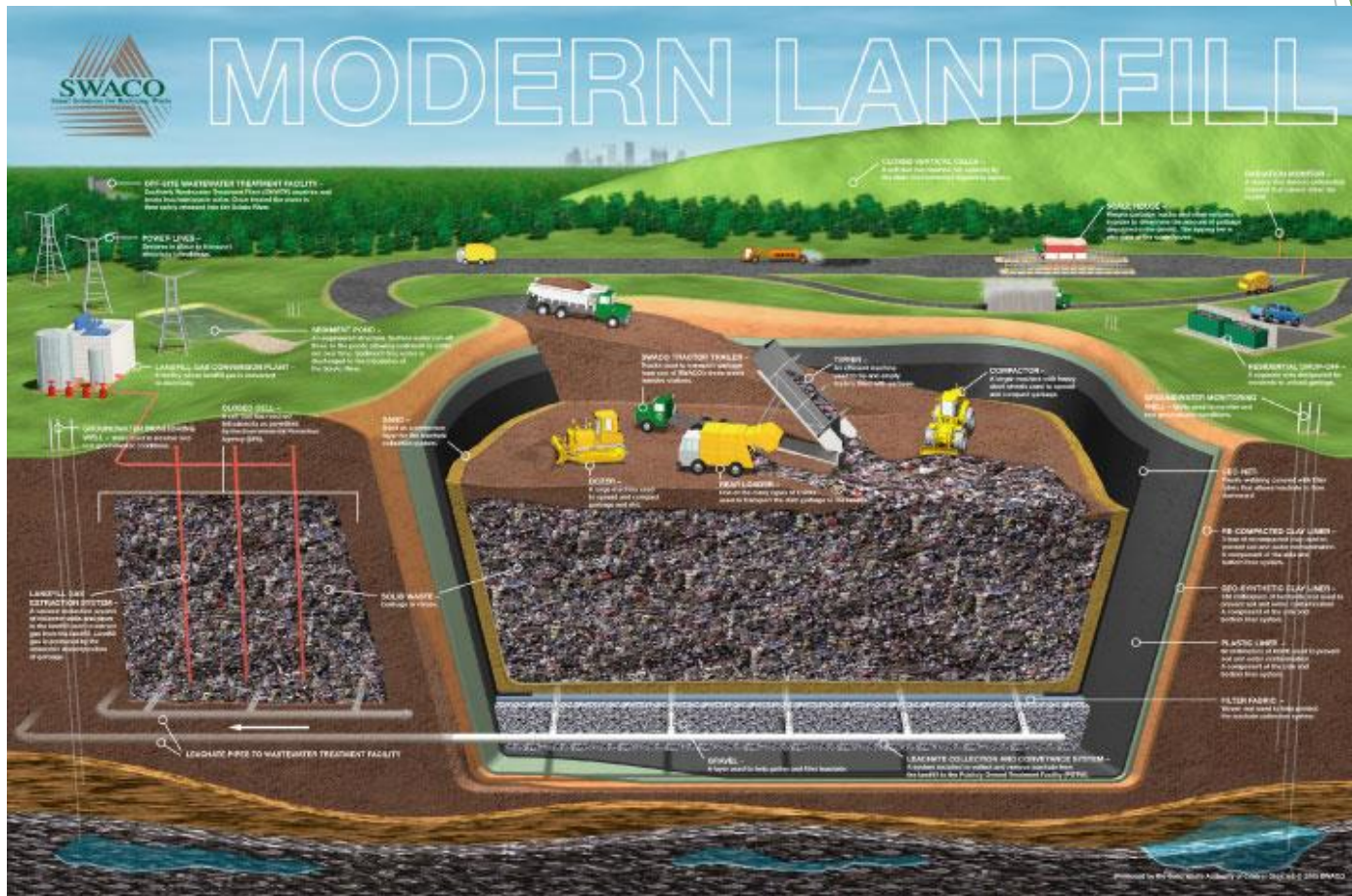


Reasons to Reduce/Reuse/Recycle/Repair/Refuse

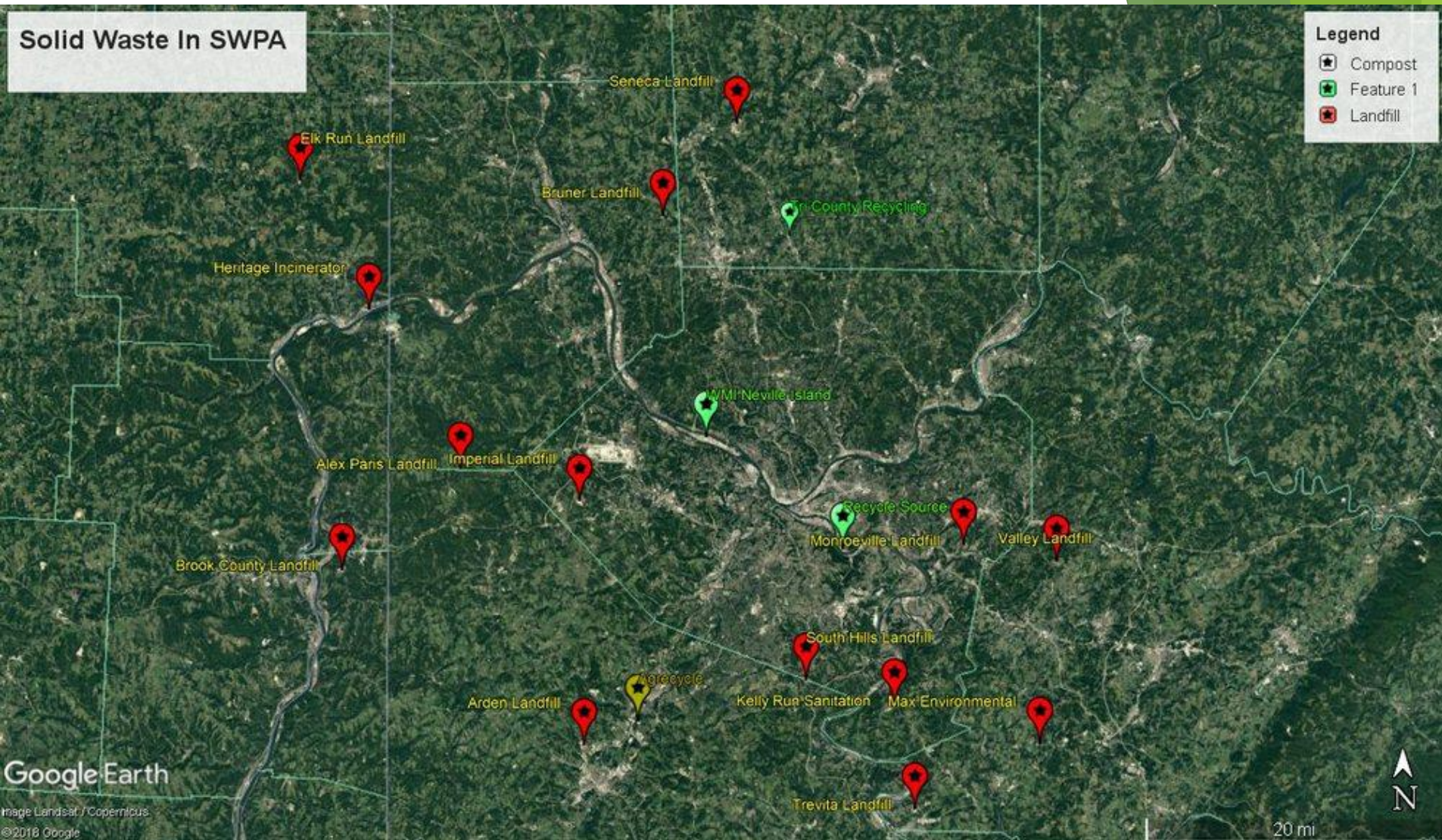
- ▶ Save Landfill Space
- ▶ Conserve Resources
- ▶ Keep our region beautiful
- ▶ Groundwater Protection
- ▶ Reduce Plastic Pollution
- ▶ Climate Action



Saving Landfill Space



PA ranked third among states that generate the most landfill gas.
Landfill trash per capita = 35.4 tons of trash for each person in PA.



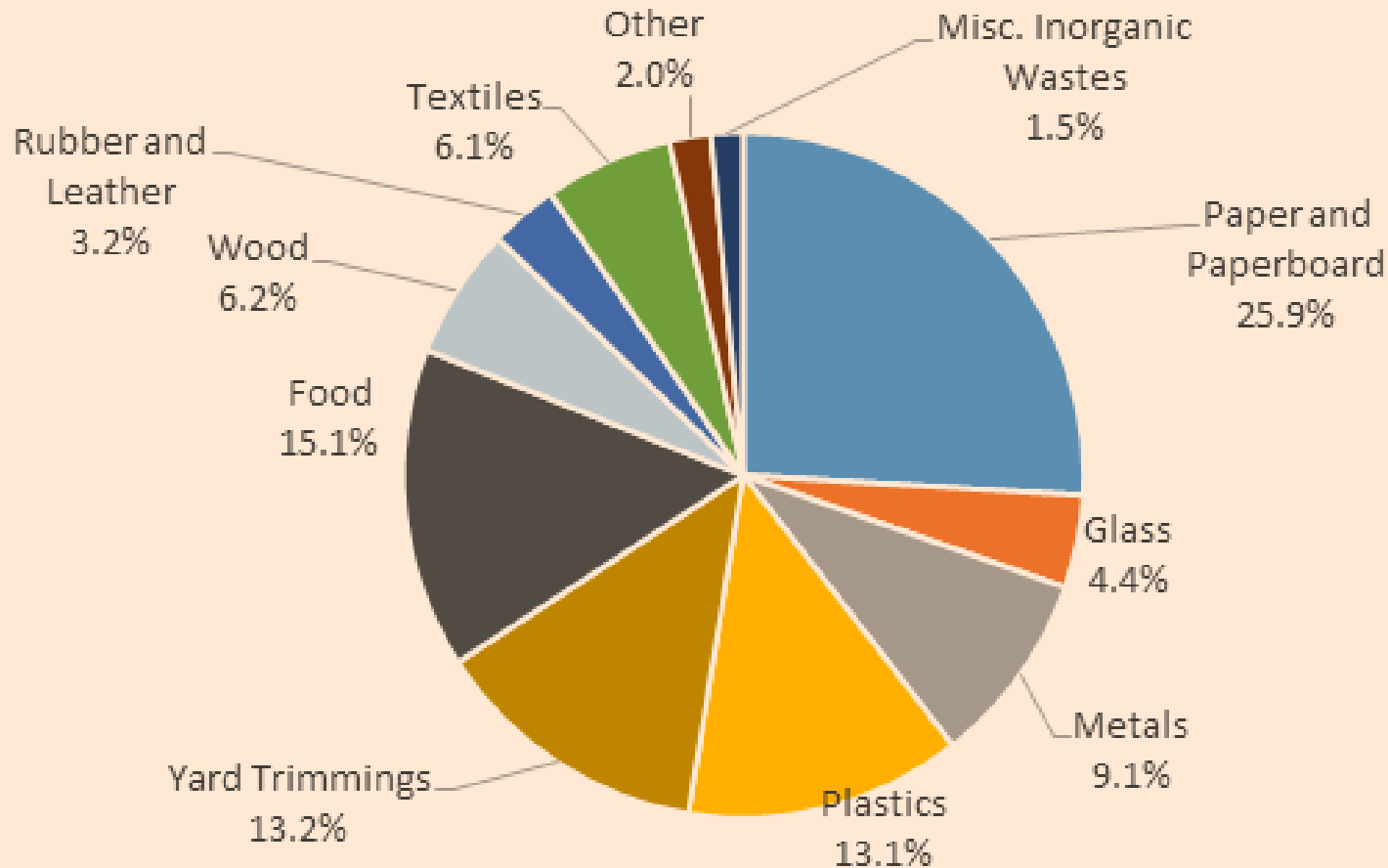
Methane is generated in landfills as waste decomposes.
Landfills are the 3rd largest source (16%) of CH₄ emissions in the USA
US EPA

Conserving Natural Resources



Making recycled aluminum requires 95% less energy than making new aluminum from raw materials

Total MSW Generated by Material, 2015 (262.43 million tons)



Each year Americans throw away 25 BILLION polystyrene cups.



Recycling in Edgeworth

- ▶ Residential
 - ▶ Single Stream Recycling
 - ▶ Paper
 - ▶ Metal
 - ▶ Plastic
 - ▶ Cardboard



Single Stream Contamination



Waste Reduction -

An easy first step is refusing single-use plastic.

Producing plastic items like grocery bags, which we use for an average of 12 minutes but can persist in the environment for half a millennium—is a reckless abuse of technology.



Depicts two million plastic beverage bottles, the number used in the US every two minutes





TWO MILLION PLASTIC BEVERAGE BOTTLES



REDUCE, Reuse, Refuse, Repair, Recycle

It starts here:



**THINK about impact BEFORE
putting it in the cart**



More than 60 million
plastic bottles end up
in landfills and
incinerators every day
- a total of about 22
billion last year.

#1 Plastic Cups...NO



Plastic Straws?...NO!

Durables are the solution.

Yes!



Reusables

Plastic Tubs...NO!



YES!



Instead of...



Use...



Replace Paper with Cloth



**Say “No” to this
Disposable**



And

**“Yes” to this
Reusable**





Recycle plastic film at grocery store receptacles

The average 500-square foot composite Trex deck contains 140,000 recycled plastic bags!



To-Go Containers

Not this.

This.



PACK ZERO WASTE



GLASS

The background of the slide features a close-up photograph of glass. On the left, a thick stream of molten glass flows downwards. In the center and right, there are several glass bottles; one is a dark blue bottle in the foreground, and another is a clear bottle behind it. The entire image is overlaid with a green geometric pattern consisting of various shades of green triangles and polygons.

Edgeworth
Borough has a
glass-only
dumpster at the
Recycling
Center.

Located off of
Chestnut Road.

Take all glass
bottles and jars
there for proper
recycling.

<http://capglassrecycling.com/>

CFL Light Bulbs -



Lowe's, Home Depot, and IKEA



Also at Lowe's and Home Depot:



Rechargeable batteries
up to 11 pounds



Used cell phones



Plastic shopping bags.

Batteries + Bulbs.

All batteries recycled

Car Batteries



and

We Fix It.
repairs inside Batteries Plus Bulbs

Electronics repair (phones, laptops, tablets, etc)

BATTERIES

Alkaline

- Batteries Plus (and Lithium)
- City-County Bldg

Rechargeables

- Lowe's and Home Depot
- Best Buy

Car Batteries

- Advance Auto
- Scrap Dealer
- HTR



**MIXED PAPER -
Another option.**





SHREDDED PAPER

Baden Borough Paper Recycling Drop-Off Site

**Raccoon Township Recycling Drop-Off Site
Aliquippa, PA**

and/or



COMPOST



APPLIANCES

► Appliance Warehouse

- Freon appliances
- Toasters
- Vacuums

Call First!

20 S 6th St, Pittsburgh, PA 15203

Hours: Open · Closes 5PM

Phone: (412) 381-8800



PRC Hard-to-Recycle Collections

- ▶ Since 2002 - collections for large appliances, tires, latex paint, electronics, cellular phones, and Christmas trees

Materials Accepted:

- ▶ E-waste
- ▶ Tires, Cell phones
- ▶ CFLs
- ▶ Ink & toner cartridges
- ▶ Polystyrene Packaging Materials
- ▶ Televisions
- ▶ Freon-containing Appliances



PRC's 2020 Hard-to-Recycle Collection Events

July 25th- LaRoche University,
McCandless

October 3rd - Settlers Cabin Park



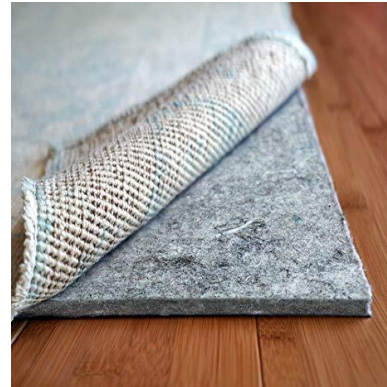
Recycling Drop Offs

◆ Textiles

- Pittsburgh Center for Creative Reuse
- Goodwill

◆ Carpet Pads

- Steinberger Floors, Inc.



◆ Blankets and Pillows

- Animal Shelters



◆ Polystyrene

- Appliance Warehouse

Recycling Drop Offs

- ◆ Aluminum & Scrap Metals
 - Castriota Metals and Recycling
- ◆ Building Materials
 - Construction Junction
- ◆ Electronics
 - eLoop LLC
 - Evolution E-Cycling
 - Best Buy -NO TVs & NO Monitors
- ◆ Tires
 - Mr. Tire
 - City Drop-offs



Specialty Recycling

- ◆ Food Waste
 - AgRecycle
 - Zero Waste Wrangler



- ◆ Oil (Used)
 - PetroMax - Motor Oil
 - Buffalo Biodiesel - Vegetable Oil
 - Fossil Free Fuel -Veggie Oil



More Specialty Recycling

- ▶ Plastic Film Recycling
 - ▶ Local grocery stores
- ▶ Paper Shredding Services
 - ▶ Iron Mountain
- ▶ Metal Hangers
 - ▶ Model Cleaners





**Compost -
Let it Rot!**

Food Scraps and Lawn & Garden Debris



&





Compostable Serviceware

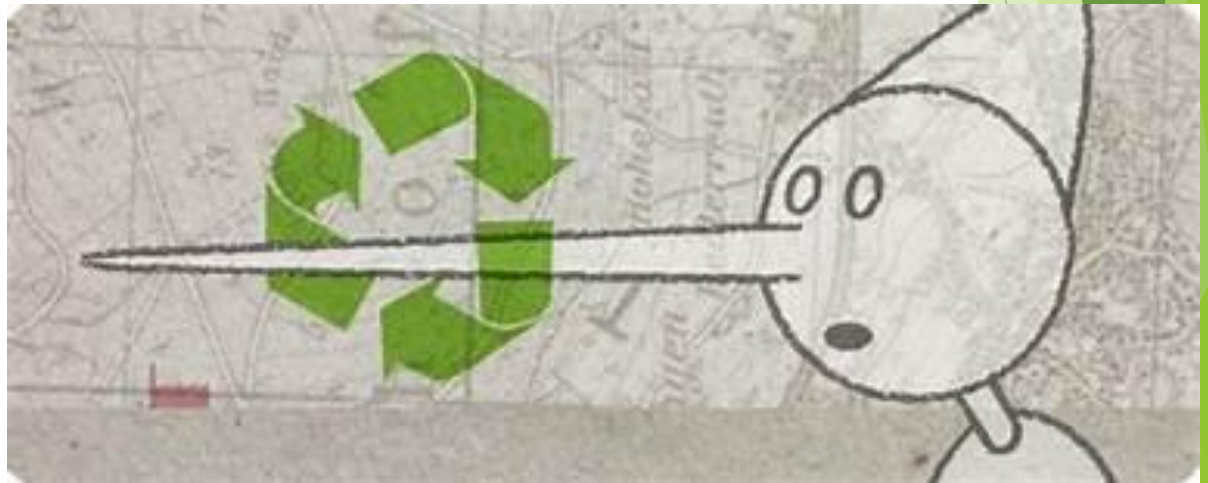


COMPOSTABLE SERVICEWARE

BPI CERTIFICATION

<https://www.bpiworld.org/CertifiedCompostable>

Beware of Greenwashing!



Organics Recycling Alternatives

- ▶ Mulching - leaves, pine needles, wood chips, grass clippings can be used as mulches in gardens or for landscaping
- ▶ Grasscycling - leave grass clippings on the lawn to decompose and return nutrients to the lawn



MORE RESOURCES

DEP Recycling Hotline - 1-800-346-4242

Collection Events - www.prc.org
Backyard Composting Workshops

***Thank you for REDUCING,
Reusing, Recycling,
Repairing, and
REFUSING!***



QUESTIONS??

