



## BOROUGH OF EDGEWORTH

301 BEAVER ROAD  
EDGEWORTH, PENNSYLVANIA 15143  
(412) 741-2866 / FAX (412) 741-6998  
www.edgeworthborough.org



Fall 2018

### BOROUGH COUNCIL

Joseph T. Hoepf  
President  
David T. Aloe  
Vice-President  
Carrie A. Duffield  
Ivan T. Hofmann  
Gregory J. Marlovits  
Daniel S. Wilson  
Elizabeth Genter

### MAYOR

Gary L. Smith

### OFFICIALS

John F. Schwend  
Manager, Sec./Treas.  
Philip J. Weis  
Solicitor

Dear Residents,

As the leaves begin their autumn crescendo, it is again time to welcome in a new season. Below are some helpful articles and timely information that you may find useful to prepare for the upcoming months. If you have any questions or need more information, please feel free to contact the Borough Office. Don't forget to "**Fall Backward**" on Sunday November 4<sup>th</sup>!

### Edgeworth Borough Trick or Treat

Be ready for our little "Trick or Treaters" going door-to-door on Wednesday evening October 31st from 6 PM to 8 PM. The Police Department advises motorists to use extreme caution during these times. Parents are reminded to dress their children in light colored or reflective clothing. A parent or an older child should accompany young children during trick or treat events.

### 2018 Midterm Election Information

As a reminder, the 2018 Pennsylvania Midterm Elections will be held on Tuesday, November 6th, 2018. Edgeworth residents may cast their ballots at the Edgeworth Club at 511 East Drive. Residents may vote between the hours of 7:00 a.m. and 8:00 p.m. on Election Day. Residents who would like information regarding absentee ballots may contact the Borough Office or visit [www.fvap.gov](http://www.fvap.gov) for detailed information.

### Political Signs – Where Can They Go?

During election campaigns, political signs are permitted on private property, however, they are not permitted on public property or along the public street right-of-way, and they will be removed if placed there. The street right-of-way is the area normally between the curb and the sidewalk. Signs placed in private yards may be no larger than sixteen (16) square feet.



# VOTE!





## Fall Leaf Collection

The Fall Leaf Collection Program will begin in mid-October, weather permitting.

It is our goal to have all leaves placed at the curb collected by mid-December. Please have your leaves ready for collection by December 7th or advise your landscape contractor of this deadline. After this date leaf pickup cannot be guaranteed and will be weather dependent. Leaves will not be collected again until the spring of 2019. Please observe the following rules:

- *If at all possible, place leaves along the street line or in the area next to the curb, NOT on the pavement. Placing leaves on the street can cause sewer back-ups and entice children to play in the leaves in the street. This creates a dangerous situation.*
- *Do not mix brush, shrubbery clippings or grass in with the leaves since this will clog the leaf collection machine and slow down the entire operation. Do not put foreign objects in the leaf pile as this could damage the equipment and even cause a serious injury. Brush will be disposed of with the Borough's brush chipper on a routine basis.*

## Contacts Lenses, Oceans, and Unforeseen Consequences

Everyday practices and habits can have far reaching consequences, especially regarding our nation's waterways. Recent studies show that over twenty percent of American contact lens users (roughly 9 million Americans) dispose of their old lenses by flushing them down the toilet. An estimated 2 billion lenses find their way into the sewage treatment process each year. This everyday practice has had unforeseen and harmful effects on our waterways. Contact lenses are made of durable plastics that are not easily broken down during the water treatment process. When the micro-plastic polymers do begin to break down, they typically shatter into smaller pieces that are even harder to filter from the treated sewage water. After the water is treated and returned into our rivers, lakes, and oceans, the tiny plastic particles accompany it. Often times these fragments are mistaken for food by marine life and can ultimately end up in the human food supply. This challenge can begin to be remedied by simply disposing of contact lenses directly into your household refuse container. Now that the damages are easily visible, let's keep our water contact free!



## Recycling Update

In today's global marketplace we are connected more than ever to people, countries, and resources from all across the globe. The current market in recyclable materials has changed dramatically over the past few years which may lead to significant changes regarding what will and what won't be accepted in your recycle bin. As a reminder, plastic bags of any kind **are not permitted** in curbside recycling cans or at the recycle center. Any materials placed in plastic bags will be removed at the Waste Management recycle facility and will be placed into a landfill. Please empty all appropriate materials directly into your recycle bin or the recycle center receptacles. While glass bottles are currently accepted as a recyclable material, global and regional market conditions are creating a glut of glass material for Waste Management and other regional waste haulers. In the coming year(s) it is expected that glass may no longer be accepted as a recyclable material and will instead be disposed of as refuse. Plastics #3 - #7 are also currently accepted as recyclable materials but are under review by Waste Management and other regional haulers. These materials are considered of lesser quality than plastics #1 and #2 and often find their way into a landfill rather than being reused. Many compounding reasons have forced waste haulers to reevaluate the materials that will be accepted in the future, including foreign markets no longer accepting contaminated recyclable material at the rates they once did. In saying that, for the time being you **do not** need to alter your current recycling routine. We will continue to update all residents concerning this topic as information becomes available. Please continue to monitor these rules and regulations in upcoming newsletters, on the Borough website, and through other local media outlets.

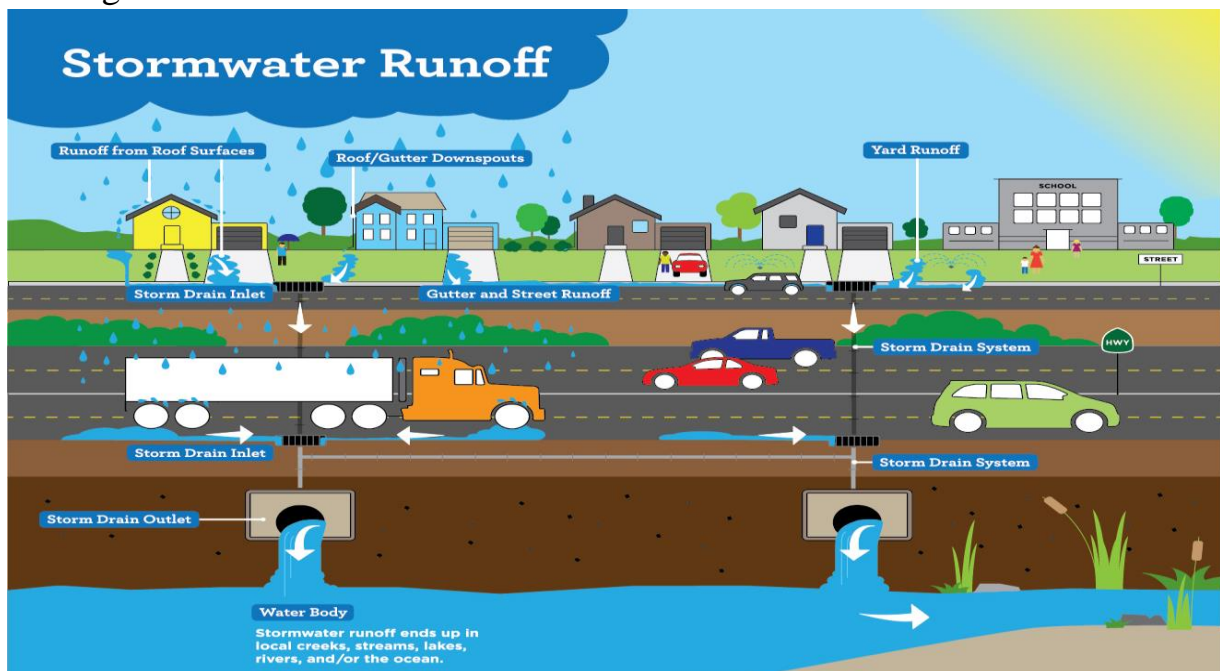


## Seeking Volunteers for the Civil Service Commission

The Borough of Edgeworth is looking for residents who want to become involved in their local government and serve the community that they call home. Currently there is an opening on the Edgeworth Borough Civil Service Commission. Interested residents can inquire by visiting the Borough Office, by phone at 412-741-2866, or by email at [office@edgeworthborough.org](mailto:office@edgeworthborough.org).

## Be Stormwater Smart!

Get to know your local waterways. Did you know that the Ohio River, Little Sewickley Creek, and Way Hollow Run all have been designated as impaired waterways by the Pennsylvania Department of Environmental Protection? You can view impaired waterways and the causes of impairment on a GIS map located on the DEP's website. Stormwater runoff is an unavoidable side effect of urbanization and development, but there are a variety of practices that both citizens and governments can implement to help mitigate runoff and the proliferation of pollutants into our local waterways. Below are a few practices that have been highlighted by the DEP. Homeowners can make a difference by implementing rain gardens and rain barrels which can help capture excess stormwater allowing it to naturally filtrate through the soil before it re-enters the water table. Home owners can also combat the effects of stormwater runoff by re-evaluating their lawn care practices. Overwatering your lawn and applying excessive pesticides/ fertilizers can compound the negative effects of runoff. Lawn applications may wash away during rain fall events, ending up in nearby catch basins and ultimately in our local water streams. We also encourage residents to work with local organizations to ensure the continued prosperity and diversity of our watershed ecosystems. Organizations like the Little Sewickley Creek Watershed Association, Fern Hollow Nature Center, and local garden clubs all play an integral part in monitoring our water-related resources and educating the public on the benefits of sustainable gardening and lawn care practices. Most importantly, residents can make a difference by reaching out to us at the local government level. If you have any questions regarding stormwater management, or have identified questionable activities that may have a detrimental impact on our local waterways, please contact us! In a world more connect than ever, it is essential that all parties in our community and the surrounding region work together to ensure the health and well-being of our treasured water resources.



## **Support Your Local Fire & Police Departments**

The 11<sup>th</sup> annual Sewickley Academy pancake breakfast will be held on Saturday October 20<sup>th</sup> from 9 a.m. – 11 a.m. The event will take place at Sewickley Academy in the Middle/Senior School cafeteria. The cost of the event is \$5 per person. Portions of the proceeds will be donated to local police departments and the Cochran Hose Company



## **Garbage Day Questions**

Many residents have called over the recent months seeking clarification regarding what items are considered acceptable refuse by Waste Management. Acceptable items include mattresses, non-Freon appliances such as microwaves, ovens, dryers, and washing machines, all of which must be placed at the curb for pickup. If your residence is serviced by the “small garbage truck” you must call the Borough Office prior to Wednesday pickup to ensure proper collection. Waste Management also accepts yard waste such as grass clippings and leaves as long as they are bagged, free of dirt and soil, and placed by the curb. Waste Management will not accept e-waste such as televisions, computer monitors, or Freon based appliances such as air conditioning units, freezers, or refrigerators. Wet paint, construction material and lumber are also prohibited. If you have any questions or concerns, please contact the Borough Office.

## **Email Newsletter Sign Up**

The Borough continues to encourage residents to sign up for the digital copy of the quarterly newsletter. Interested residents can submit their email addresses on the Borough website under the Newsletter heading. We will continue to send paper quarterly newsletters for those residents which prefer that medium. We are pursuing more responsive, adaptive, and sustainable methods of communication that will work for all Borough residents. For further information regarding the E-Newsletter please contact the Borough Office at 412-741-2866 or visit the Borough’s website.

