

BOROUGH OF EDGEWORTH

301 BEAVER ROAD
EDGEWORTH, PENNSYLVANIA 15143
(412) 741-2866 / FAX (412) 741-6998
www.edgeworthborough.org



BOROUGH COUNCIL

Joseph T. Hoopp
President
David T. Aloe Vice- President
Carrie A. Duffield
Ivan T. Hofmann
Gregory J. Marlovits
Daniel S. Wilson
Elizabeth H. Genter

MAYOR

Gary L. Smith

OFFICIALS

John F. Schwend
Manager, Sec./Treas.
Philip J. Weis
Solicitor

Spring 2018

Dear Residents,

After a cold & snowy winter, spring is finally near! Here are some informative news articles that you may find useful. If you have any questions or need more information, please feel free to contact the Borough Office. Don't forget to "spring forward" on March 11th!

Special Election

Pennsylvania's 18th Congressional District will soon take center stage under the national political spotlight. A special election will be held on Tuesday, March 13, 2018 to determine who will serve the remainder of former Representative Tim Murphy's seat in the U.S. House of Representatives. Residents may vote at the Edgeworth Club located at 511 East Drive. The Edgeworth Club offers off-street parking and is handicapped accessible. This special election **is not a primary** and will be open to all residents, regardless of political affiliation.



Primary Election

A second election will also take place this spring. The primary for the 2018 midterm-elections will be held on Tuesday, May 15, 2018. Residents may again vote at the Edgeworth Club. For any questions regarding either election, please contact the Borough Office and we will try to clarify any questions that you may have.

Recycling Bins

As a reminder to residents, 32 gallon recycling bins are available for purchase at the Borough Office during regular business hours. Each bin, which includes a lid, is \$20.



Recycling and Garbage Collection Times

Waste Management has highlighted the need for residents in the Borough to have both their recycling and garbage cans ready for pickup at 7 a.m. every Wednesday. It is important to have your cans ready by this time every week because it is hard to predict when a garbage route may change. New drivers, truck repairs, and the weather can all affect the time that your refuse and recycling gets picked up. By ensuring that your cans are ready by 7 a.m. you will always have your garbage and recycling ready before the first Waste Management trucks enter the Borough. As an early reminder, regular Wednesday garbage collection will be delayed until Thursday for the week of Memorial Day.

Edgeworth Leaf Compost

As spring approaches and gardens and yards are prepared for the coming months, we would like to remind residents that the Borough has an abundance of leaf compost available. Edgeworth has a supply of leaf compost that has decomposed into rich, black soil conditioner. Many residents use this compost for summertime projects. If you are interested in receiving a load of compost, please call the Borough Office to be placed on the list for delivery. **Note*** Delivery of compost varies and may take up to two weeks, depending on the availability of the Public Works Department. For residents who may need an immediate load of compost, there will be a stockpile available at the Edgeworth recycle center. If using the compost located at the Recycle Center, residents must retrieve and unload the compost themselves.



Message from the Chief of Police

Power outages can make for both stressful and challenging situations. The Edgeworth Police Department understands that these situations can be uncomfortable for residents. The Department must balance traffic control, resident safety, and other indeterminate variables with the same restrained resources that residents may face during these situations. We ask that residents remain patient and calm during these situations. The Police Department is likely aware of the outage and has already contacted Duquesne Light or other appropriate personnel in effort to resolve the outage.

Spring Leaf Collection

Weather permitting, the curb-side Leaf Collection Program will begin **the first full week of April**. It is our goal to have the leaves picked up within two weeks - by Friday, April 13th. Leaves that are not put out for collection will have to be bagged and left for Waste Management until the fall. Please observe the following rules:

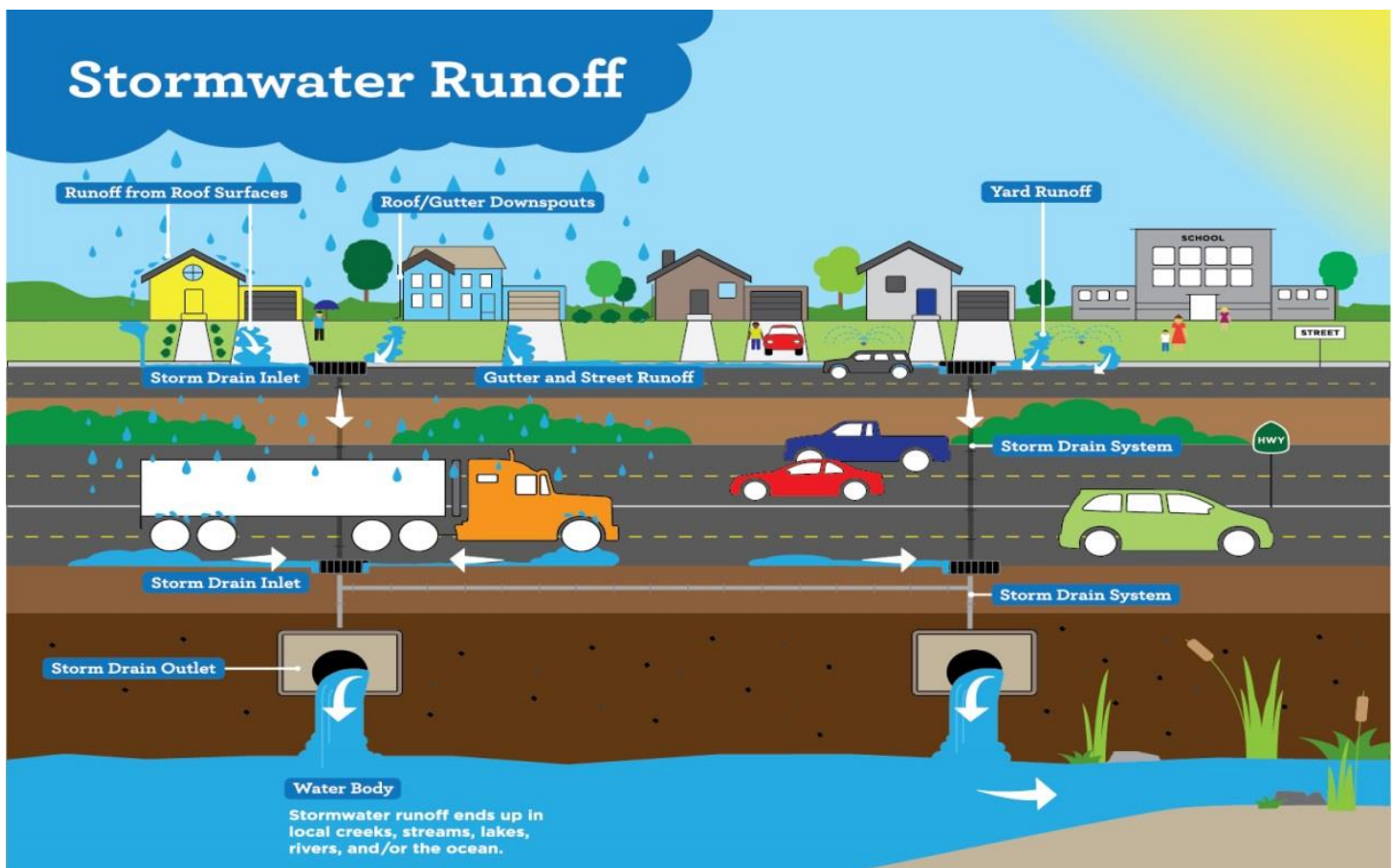
1. If at all possible, place leaves along the street line or in the curb lawn NOT on the pavement.
2. Do not mix brush, shrubbery clippings, grass, root balls, clumps of dirt or foreign objects with the leaves since this could cause a serious injury and will **clog** or **damage** the leaf collection machine and slow down the entire operation. Grass and shrubbery clippings are to be bagged for weekly garbage collection and brush will be disposed of with the Borough's brush chipper on a routine basis. Leaves that are mixed with brush/grass will not be collected.

Sidewalk Repair Program

In order to conclude the 2017 sidewalk repair program, the Borough will be reviewing sidewalks that were marked for replacement in order to verify sidewalk safety. In order to further community compliance with the program, the Borough will be reissuing instruction letters to those residents who have not complied with the defined standard of repair/replacement. To avoid potential property liens, we ask that residents follow through with the designated sidewalk repair. Penn Landscape and Cement will return to the Borough to conclude any work that was unfinished in 2017. The Borough will continue to accept payment for the repair program through April 1, 2018. If you receive a notice in the mail or have any questions regarding the program please contact the Borough Office.

How Stormwater Can Impact a Community

Stormwater can be one of nature's most powerful and unwieldy vessels of transportation. Impaired sediment, vehicle oil & gasoline, pesticides, and numerous strains of bacteria & viruses can all be swept up and transported into our region's numerous waterways. As you may guess, rivers are the primary source of our region's water supply. When rivers aren't healthy, public health risks can significantly increase. Humans aren't the only species who can be negatively impacted by stormwater runoff. Sedimentation carried by stormwater can smother aquatic life and destroy their habitats. Fertilizer and pesticides transmitted into our waterways by stormwater runoff may foster excessive algae growth, creating algal blooms that remove oxygen from the water, again, harming local fish and aquatic wildlife. Stormwater can also carry debris such as plastic bags, cigarette butts, etc. into Little Sewickley Creek and the Ohio River. This debris is not only unsightly, but can be threatening to ducks, turtles, and birds that call our region home. Our waterways are an essential asset to our region. Let us work together to preserve their beauty and vitality. If you see illicit discharges or illegal dumping into our storm sewers, please report it to the Police Department or Borough Office.



E- Newsletter Sign Up

In an effort to reach our residents through a variety of platforms, Edgeworth Borough is continuing to encourage residents to sign up for our Electronic E-Newsletter. Residents who sign up for this service will be sent a digital copy of the Borough's quarterly newsletter and will be able to read them anywhere at any time on their mobile devices and home computers. This edition of the newsletter will feature photographs and other illustrations that are not feasible for the printed edition. This effort will cut back on the use of paper, ink, and postage which will lighten our environmental impact and ensure that taxpayer dollars are allocated as efficiently and effectively as possible. In order to sign up for this edition please visit the Borough website and enter in the appropriate information on the homepage. For those who prefer the paper version of the newsletter no action should be taken, we will continue to send you this edition.

Recognizing QVSD Championships

Edgeworth Borough proudly recognized the Quaker Valley Boys' Soccer and Football Teams on their outstanding 2017 campaigns at the January 20, 2018 Borough Council Meeting. Council President Joseph Hoepp read aloud two honorary Proclamations congratulating the student athletes and awarded framed copies to members of both teams. The Quaker Valley Boys' Soccer Team captured their AA Pennsylvania Interscholastic Athletic Association (PIAA) state title by defeating Lewisburg 1-0 at Hersheypark Stadium. The football team captured both the AAA Western Pennsylvania Interscholastic Athletic League (WPIAL) and PIAA titles by defeating rival Aliquippa 2-0 at Heinz Field and Middletown at Hersheypark Stadium respectfully. Edgeworth Borough wishes the student athletes continued success on and off the field. **Go Quakers!**



Recycle Center

Edgeworth Borough is delighted to offer multiple recycling options for our residents, including curbside pickup and the recycle center. However, our recycle center has been used improperly in recent months. As discussed in prior newsletters, materials placed in bags in the recycle center receptacles will immediately be removed from Waste Management's recycling assembly line and thrown into the trash. This practice is both wasteful and inefficient. Please remove your recyclable material from any bags prior to disposal. We also ask that residents break down cardboard boxes prior to disposing of them in the receptacles. This will allow for more material to be placed within each container and will ensure that residents are receiving the optimal return for the service that Waste Management provides. We encourage residents to view the designated signage located at the facility to address any questions or concerns regarding what materials are acceptable for disposal in the receptacles.

Hard To Recycle Event

The Quaker Valley Council of Governments will be hosting a household material & electronics recycle event at the Quaker Valley High School on June 30, 2018. Televisions, computer monitors, tires, and other general electronics as well as paper shredding service will be available. More information concerning the time of the event, fees, and excluded items can be found on www.edgeworthborough.org as well as in the summer 2018 Newsletter in the coming months

Spring Forward

